

DRAWING NUMBER
53/74

WEITZER SUBDIVISION P. U. D. PLAT NO. THREE

(MOON LAKE P.U.D.)
SHEET 3 OF 6

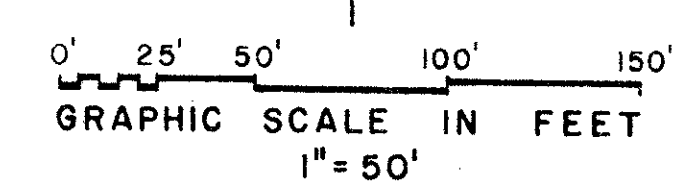
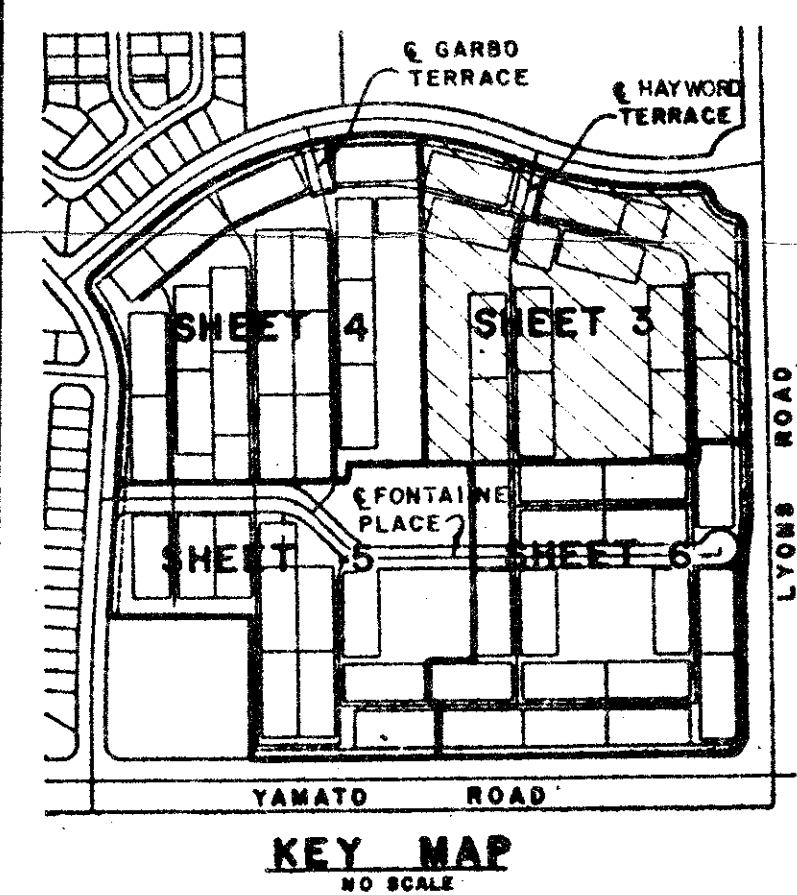
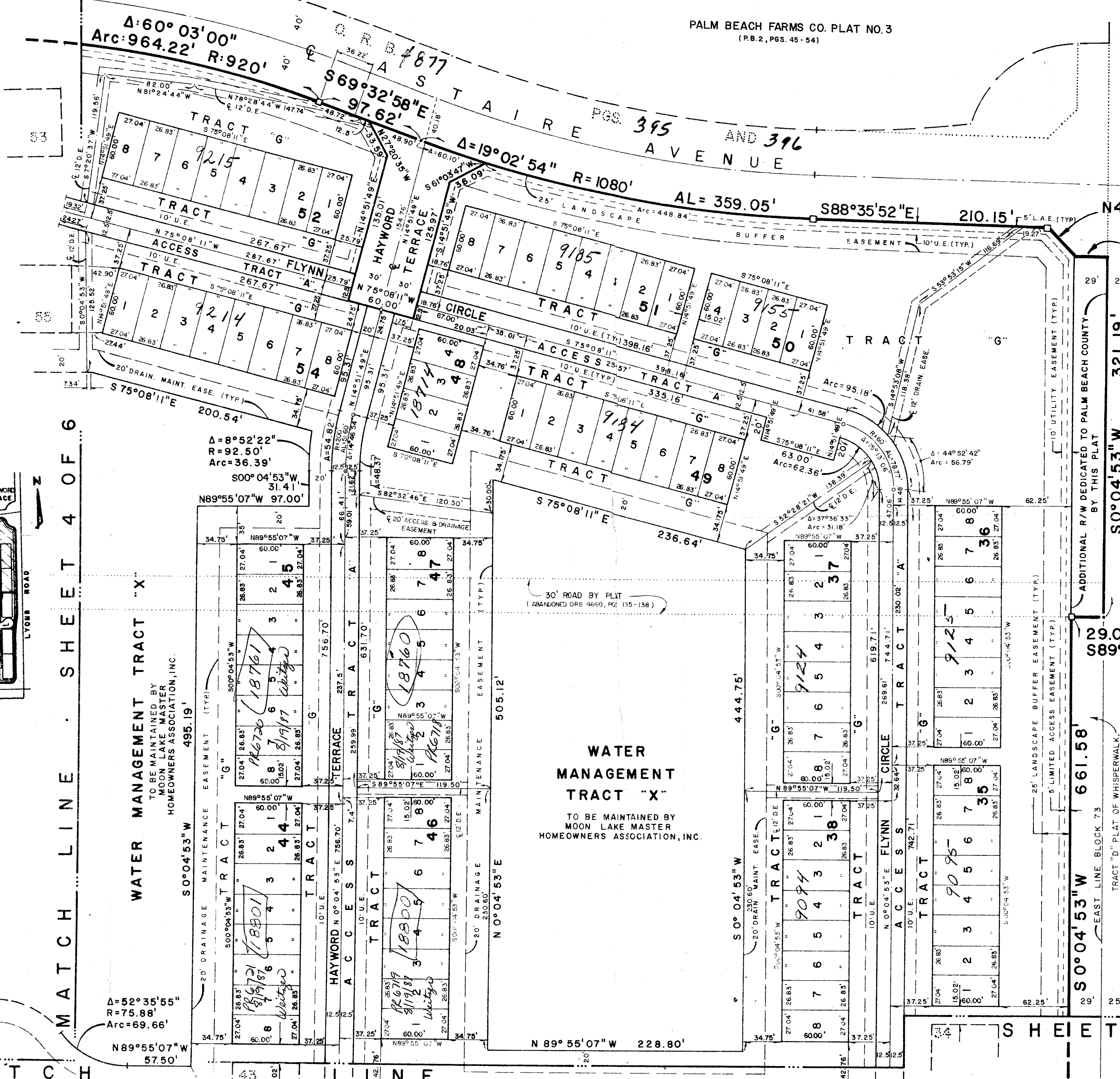
74

STATE OF FLORIDA
COUNTY OF PALM BEACH
This Plat was filed for record of
M. this _____ day of _____
and duly recorded in Plat Book No. _____
on Page _____
John B. Dunkle, Clerk Circuit Court
By _____ D.C.

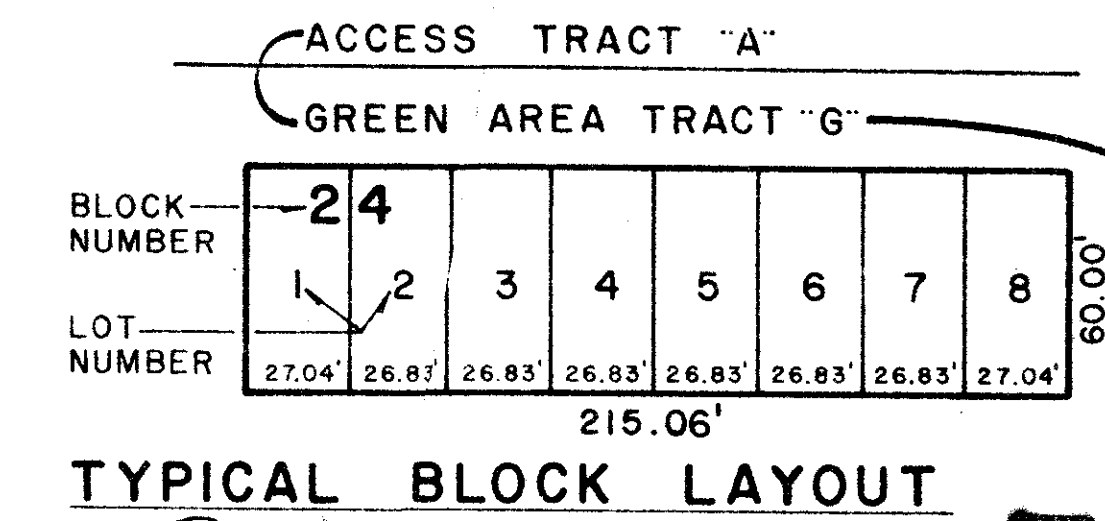
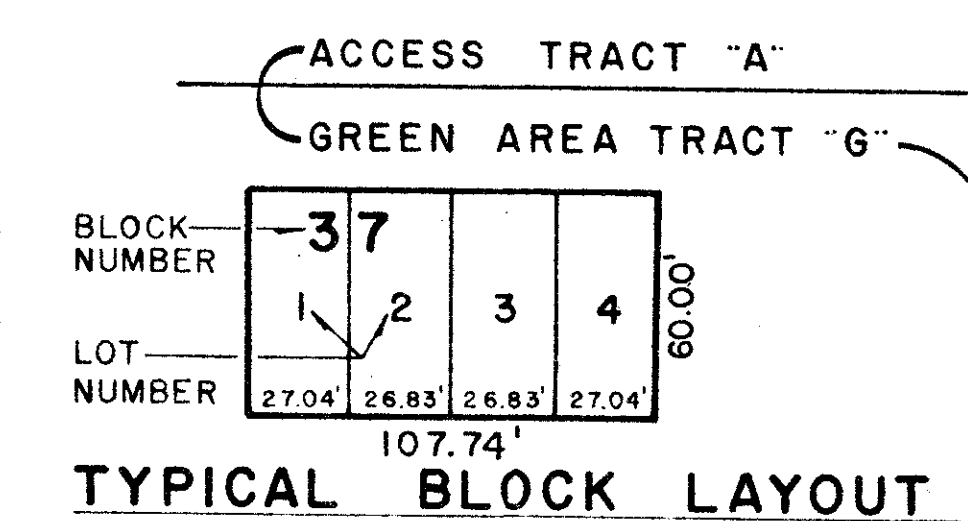
DRAWING NUMBER

DRAWING NUMBER

DRAWING NUMBER



WHISPER WALK
P.B. 43, PGS. 100-101



NOTE:
BUILDING TIES SHOWN HEREON ARE PERPENDICULAR
TO CENTER LINES OF STREETS AS SHOWN.
0349-003

53/74

SHEET 6 OF 6

**WEITZER SUBDIVISION P.U.D.
PLAT #3**

**MICHAEL B. SCHORAH
& ASSOCIATES, INC.**
ENGINEERS • PLANNERS • DEVELOPMENT CONSULTANTS
TEL (305) 968-0080
1850 FOREST HILL BLVD., SUITE 205
WEST PALM BEACH, FLORIDA 33406

